

Steps to KABCD:

Preparation

Share the God's Kingdom vision of sustainable community-driven development

Explore resources plan

Form core groups and gather individuals, churches and NGOs into partner's network

Mobilize the Shalom community

Respond to service gap by mobilising social assets and creating opportunities in the community

Empowerment and self-contained

Facilitate community resilience and transform a receiver into a giver

Multiply network establishment

Continue to transform communities, all assets are recognized and their power and effectiveness can be multiplied to build the kingdom community

Hong Kong Church Network for the Poor (HKCNP) was founded by Hong Kong Chinese Christian Churches Union, Hong Kong Christian Council, Hong Kong Church Renewal Movement and a number of Christian NGOs, churches, and Christians who are serving the poor in the community. HKCNP is a network of community partners in collaboration to care for the poor to achieve community transformation. We focus on identifying service gaps with our partner churches and develop pilot programs to respond to needs. HKCNP provides knowledge-based, cared, and trustworthy services that focus on capacity building, empowerment, and mentorship. We gather community network resources to help and empower frontline partners to expand their service to reach more underprivileged groups, mobilize churches to care for the poor and fulfil God's Kingdom mission more effectively in the community.

Stories in Community Transformation



We are willing to support you in spreading out God's love

If you would like to transform your community, please contact us!

You are cordially invited to support community transformation through praying, donating and participating to spread God's Love and gospel in Hong Kong! So that to develop sustainable community transformation and bring God's kingdom to the community!



Thank God for bringing Kingdom Asset Based Community Development (KABCD) community transformation into various districts in Hong Kong. Looking forward to your participation, together to bring God's peace and hope to our society.

Kingdom Asset Based Community Development

KABCD



To Build A Resilient City
In Empowering The Poor

"The Spirit of the Lord is upon me, because he has anointed me to proclaim good news to the poor. He has sent me to proclaim liberty to the captives and recovering of sight to the blind, to set at liberty those who are oppressed, to proclaim the year of the Lord's favor."

(Luke 4:18-19)

✉ P.O. Box No. 88427, Sham Shui Po Post Office, Kowloon
☎ (852) 3689 9810
📞 (852) 6760 2025
🌐 <http://www.hkcnp.org.hk>
📺 <http://fb.com/hkcnp> (HKCNP)
📷 <https://www.instagram.com/hk.cnp/>

📠 (852) 3013 8950
📠 (852) 6760 2025
@ info@hkcnp.org.hk

Founding Organizations

Hong Kong Chinese Christian Churches Union | Hong Kong Christian Council | Hong Kong Church Renewal Movement



"Let us take Shui Chuen O as an example to gain a deeper understanding of the KABCD!"

“They shall not hunger or thirst, neither scorching wind nor sun shall strike them, for he who has pity on them will lead them, and by springs of water will guide them.” (Isaiah 49:10)

This is the prayer that touched me when God led us to serve in Shui Chuen O. We hope to connect God's kingdom-minded groups of disciples, and pass on to spread the kingdom asset based development with them.

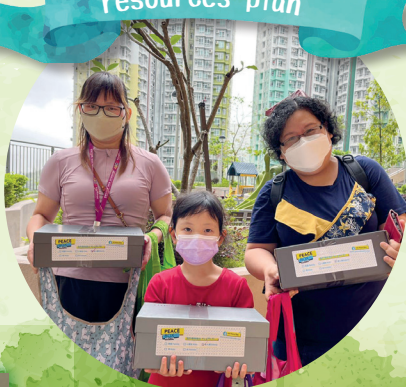
- Rev. Lin Chun Choi, HKCNP Pastor Network Advisor

Since 2014, HKCNP and partner church pastors and fellows have personally set foot in Shui Cheun O Estate to understand the needs and situations of 30,000 grassroots people in the community. They went prayer walks and shared the vision of community transformation.



① Preparation

It is grateful that more and more churches are carrying out networking service in Sha Tin District, and are connected to different cooperative units (including churches, schools, and organizations) that are willing to serve Shui Chuen O. HKCNP and the four core churches all have a clear vision of serving in Shui Chuen O. To understand the needs of the community and conducting district service more effectively, we interviewed the residents of Shui Cheun O through questionnaire survey in March 2019. This helped us to gain a deeper understanding of the needs in the community, and design appropriate service for the residents.



② Explore resources plan

HKCNP Shui Chuen O Network continues participating in various Love In Action projects, bringing more resources into the estate to serve the needy neighbours. We united to build kingdom asset-based community with caring and resource sharing. We went on with close contact with the neighbours through regular visits and calls to greet the needs of the elderly singletons and families of elderly doubletons.

③ Mobilize the Shalom community



⑤ Multiply network establishment



HKCNP Shui Chuen O Network had successfully established a networking team composed of core network fellows and volunteers in each building (18 buildings in total). From the initial four churches in Sha Tin District, and expanded to the current 15 partners to witness the transformation of Shui Chuen O into a community with God's Shalom to support and share with each other. I believe that Shui Chuen O Network will continue to explore more different networks and share multi-parties community resources to serve the neighbours together with neighbourhood volunteers and transform more lives!

④ Empowerment and self-contained



HKCNP Shui Chuen O Network partners team cooperated with The Nethersole School of Nursing (CUHK) to empower housewives to become community helpers. Through lecture courses, skills training, and volunteer activities, they enhanced their nursing knowledge and skills in visiting the elderly living alone. They integrated the mutual neighbourhood-caring culture into their learning and life, so as to cultivate a group of quality and close-knit volunteer team. Every housewife is assigned to visit the elderly living alone for long-term care. May God make Shui Cheun O Estate a caring and supportive community.

Shui Chuen O Neighbourhood Sharing

“The epidemic had been raging for over two years and widened the distance between people. However, this did not block the relationship between neighbourhoods. It brought us closer to each other's care and concern. HKCNP worked closely with The Nethersole School of Nursing (CUHK) and other district organisations to carry out visits, distribute materials and prepare community activities. These sent heartwarming blessings to the service targets. At the same time, it spread the spirit of volunteerism and achieved to motivate neighbourhood-caring culture. I deeply appreciated the importance of neighbourhood connections. The volunteers were very enthusiastic and encouraged us to help ourselves, and then help others. We built a mutual support network. They also served as good role models for the children. Here, I look forward to finding more hidden elders, so that more people can pay attention to those around them.”



Excerpt from "Shui Chuen O Neighbourhood Resilient Stories"

Looking forward to seeing your community transformed!