



Hope of the City Loving the City

7th July, 2019

Susanna Ma, CPA, MCS

Hong Kong Church Network for the Poor(HKCNP) Executive Director

Jesus modelling “Downward Mobility”

Think of yourselves the way Christ Jesus thought of himself. He had equal status with God but didn't think so much of himself that he had to cling to the advantages of that status no matter what. Not at all. When the time came, he set aside the privileges of deity and **took on the status of a slave, became human!** Having become human, he stayed human. It was an incredibly humbling process. He didn't claim special privileges. Instead, he lived a selfless, obedient life and then died a **selfless, obedient death**—and the worst kind of death at that—a crucifixion.

Philippians 2:5-8
《The Message》

The final prayer of Jesus

“My prayer is not for them alone. I pray also for those who will believe in me through their message, that **all of them may be one**, Father, just as you are in me and I am in you. May they also be in us so that the world may believe that you have sent me. I have given them the glory that you gave me, that they may be one as we are one—I in them and you in me—so that they may be brought **to complete unity**. Then **the world will know that you sent me and have loved them even as you have loved me.**

John 17:20-23



Historical Background of Poverty in HK

UNEMPLOYMENT

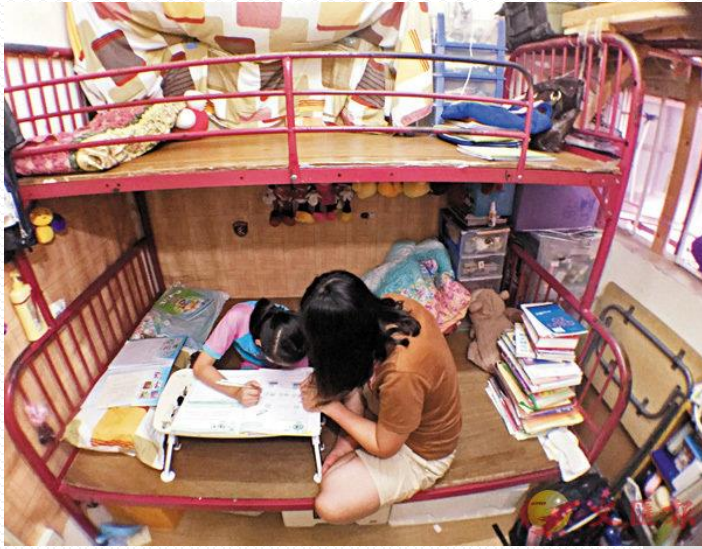
The Asia financial turmoil in 1997 and the global financial tsunami in 2008 worsened the **bubble economy** of Hong Kong which mainly relies on financial sector and the real estate market. Thus, the unemployment rate rocketed and the wealth disparity

STRUCTURAL UNEMPLOYMENT

With **globalization and technology** developing rapidly for the past decades, many labor are substituted by machines. Under the circumstances of economic restructuring, low-level labor are facing ‘**structural unemployment and poverty**’ problem. The **extreme dichotomy** between high-level and low-level labor market intensify the wealth gap.



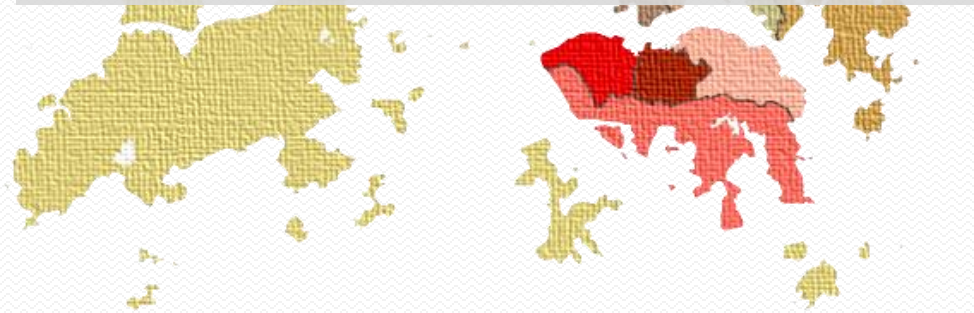
Illegal cubicle homes on the rooftop of an industrial building in Kwun Tong



Children study on their beds

2017 Poverty Rate: **20.1%**

i.e., 1 poor people out of 5 in Hong Kong!



Cardboard collectors struggle as prices fall to the lowest point in 10years

(At least)

6 Hardship brought along by Poverty

01



Housing
Living in subdivided flat with 7-13 sq. meters, while toilet and kitchen share the same space

02



Food
A research discovered that 17.6% of poor children have ever been in starvation or eating less

03



Health Care
Unaffordable to treatment, drugs and SEN counselling

04



Education
While adult does not afford to promote their competitiveness, it is also hard to provide good learning materials and environment to children

05



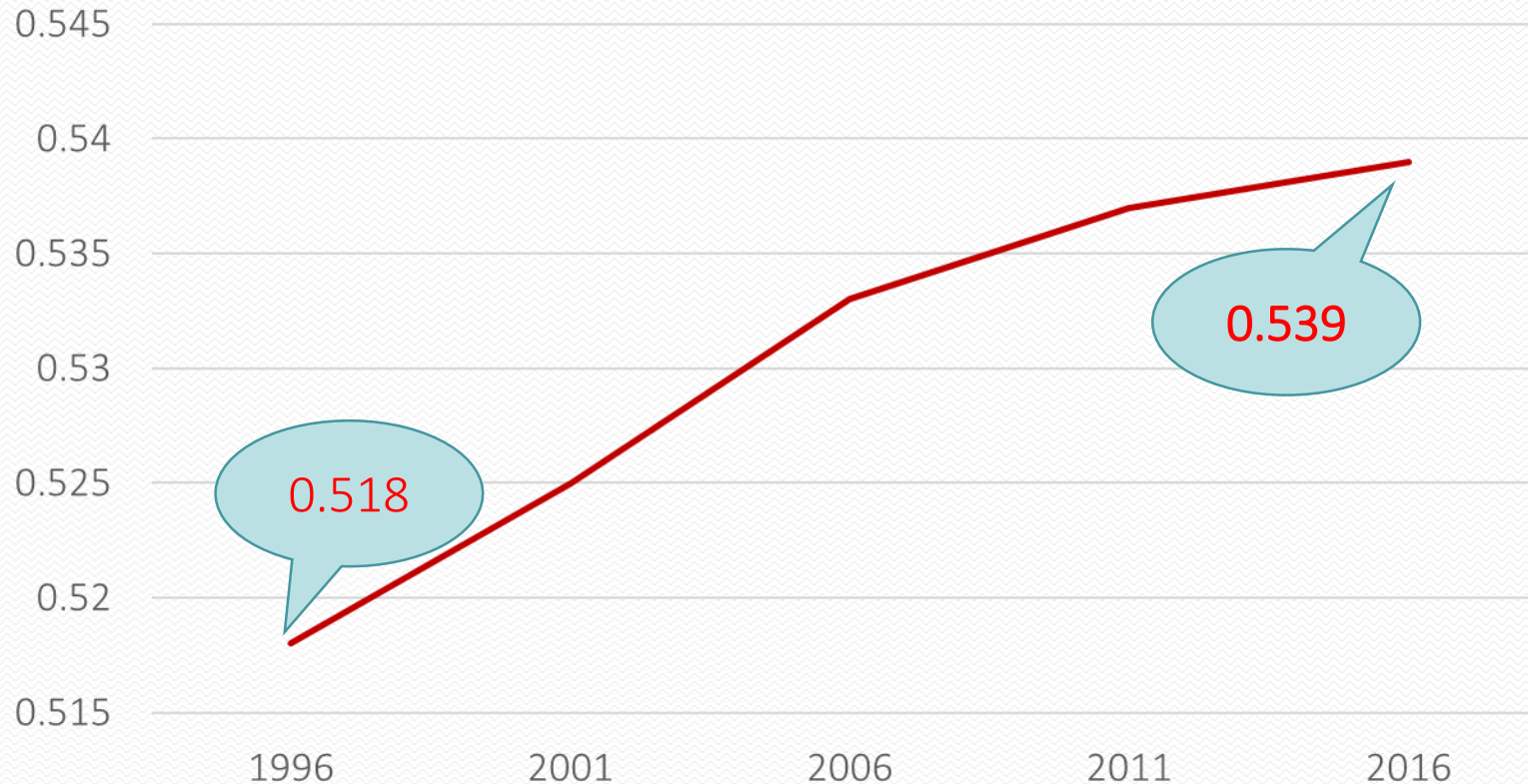
Social Life
Poor families put their time on work, resulting a lack of time in entertainment and exploration
Children can also hardly join the paid school activities

06



Family Relationship
The burden of moving upward is given to children, which creates tension between family members

Gini Coefficient reaches the PEAK



The median of monthly income of richest household reaches \$112.4K, while that of the poorest is \$2.56K.

The 2015 Report on the World Social Situation:

Inequality not only matters to people living in poverty, but also for the overall well-being of society.

- increases the **vulnerability** of societies
- generates potent sources of **social tension**, fertile ground for **political and civil unrest**, **instability** and heightened human **insecurity**

How did HKCNP start?

2002: Church pastors **joint to PRAY and shared** their burden on HK poverty problem with more pastors. They **started a movement** to gather jobs and assistance for the unemployed, due to the global financial crisis.

2004: **Over 1000 middle-aged people** with low education level were provided jobs through the network.

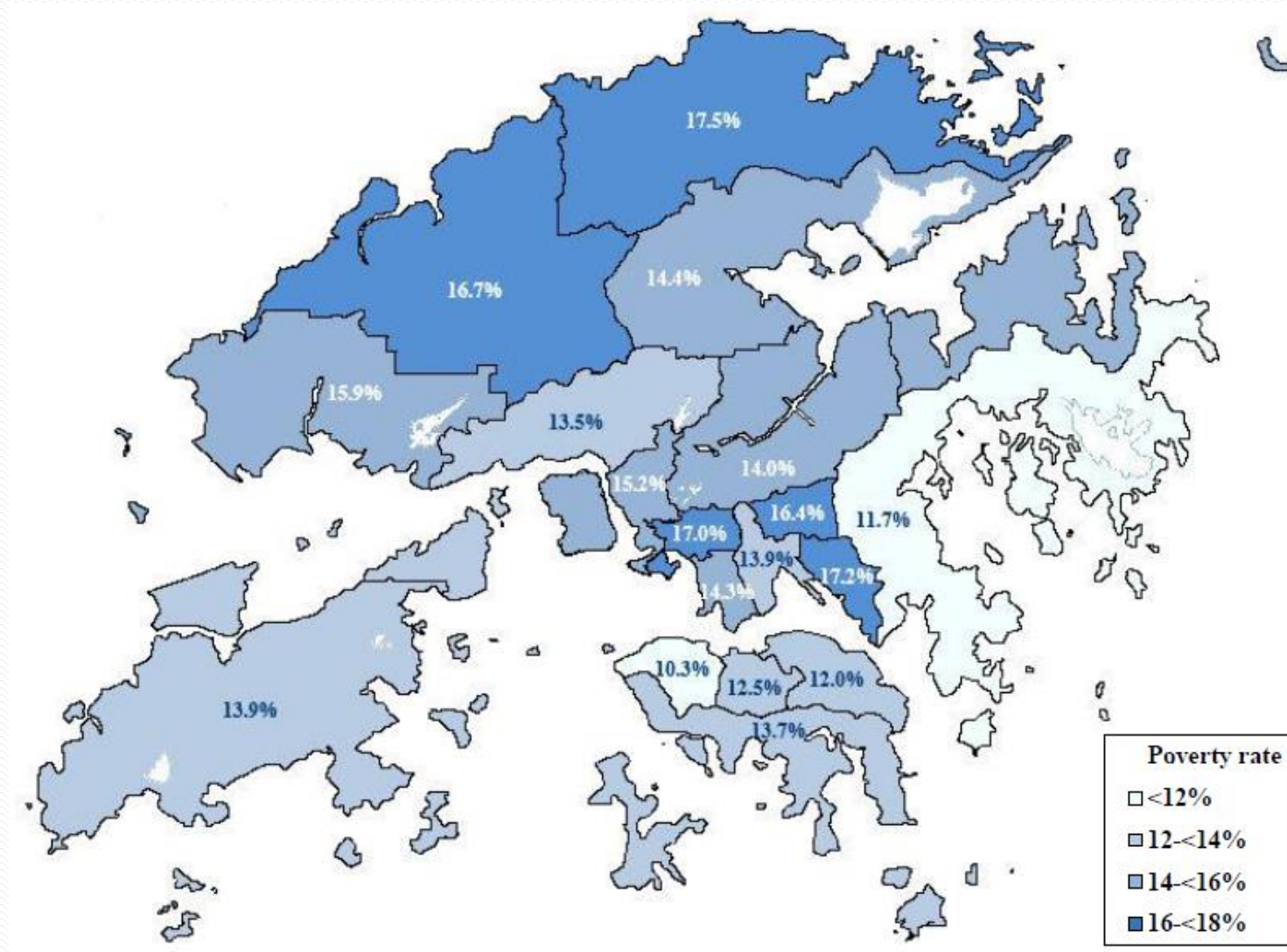


2005: “**Intergenerational poverty**” was identified to be one of the most severe poverty problem.

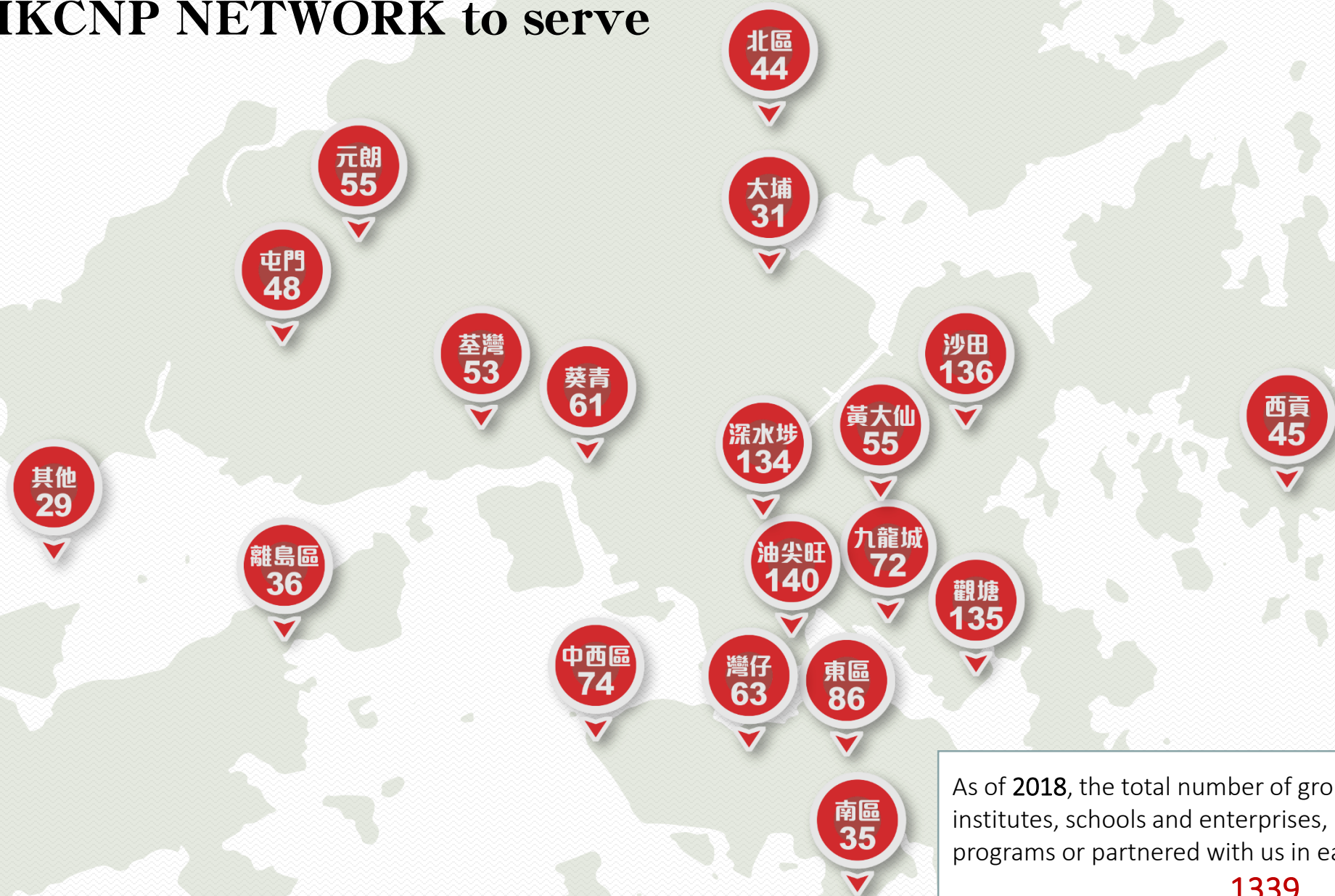
2007: The **first mentorship pilot program** was launched to solve the problem. It was invented by Dr. Charles Chan and Dr. Philemon Choi, which was **adopted to be policy** in 2009.

2008: HKCNP **Established** to tackle the problem!

Poverty in every districts



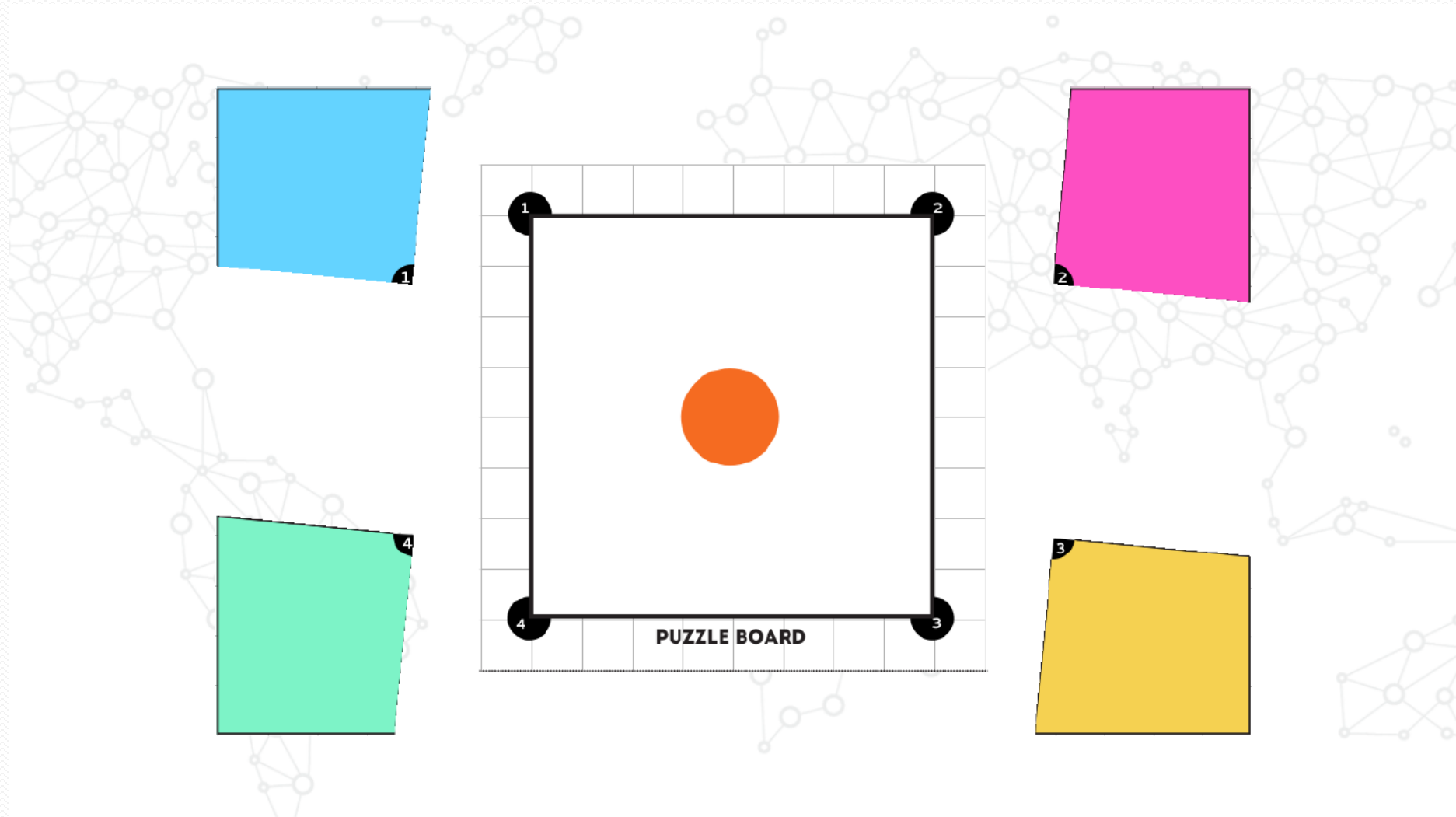
HKCNP NETWORK to serve



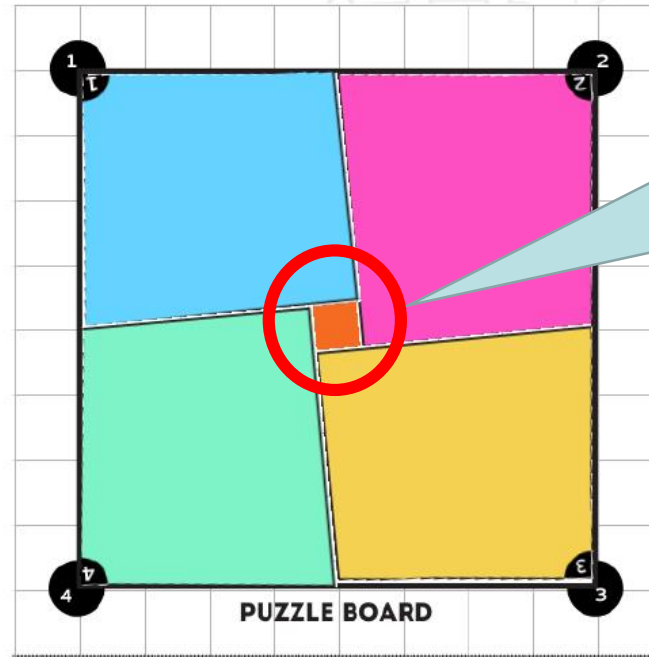
As of 2018, the total number of groups, such as churches, institutes, schools and enterprises, participated in HKCNP programs or partnered with us in each district:

1339

What is a NETWORK?



What might be the result of each ministry pursuing its OWN plans and NOT working together?



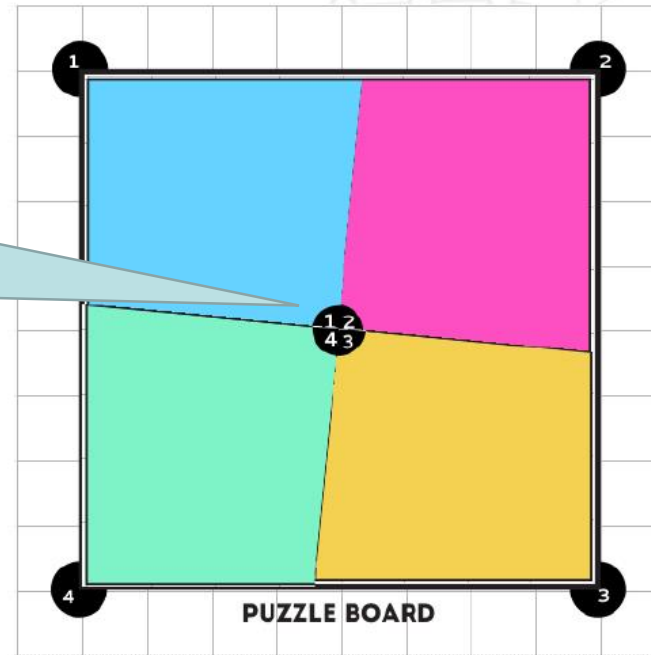
We are doing our
OWN parts and
we **FAILED** to
achieve our target.

If the whole body were an eye, where would the sense of hearing be?...
The eye cannot say to the hand, "I don't need you!"

1 Cor 12:17a, 21a

If we share our vision and work:

We can form a network to serve effectively!

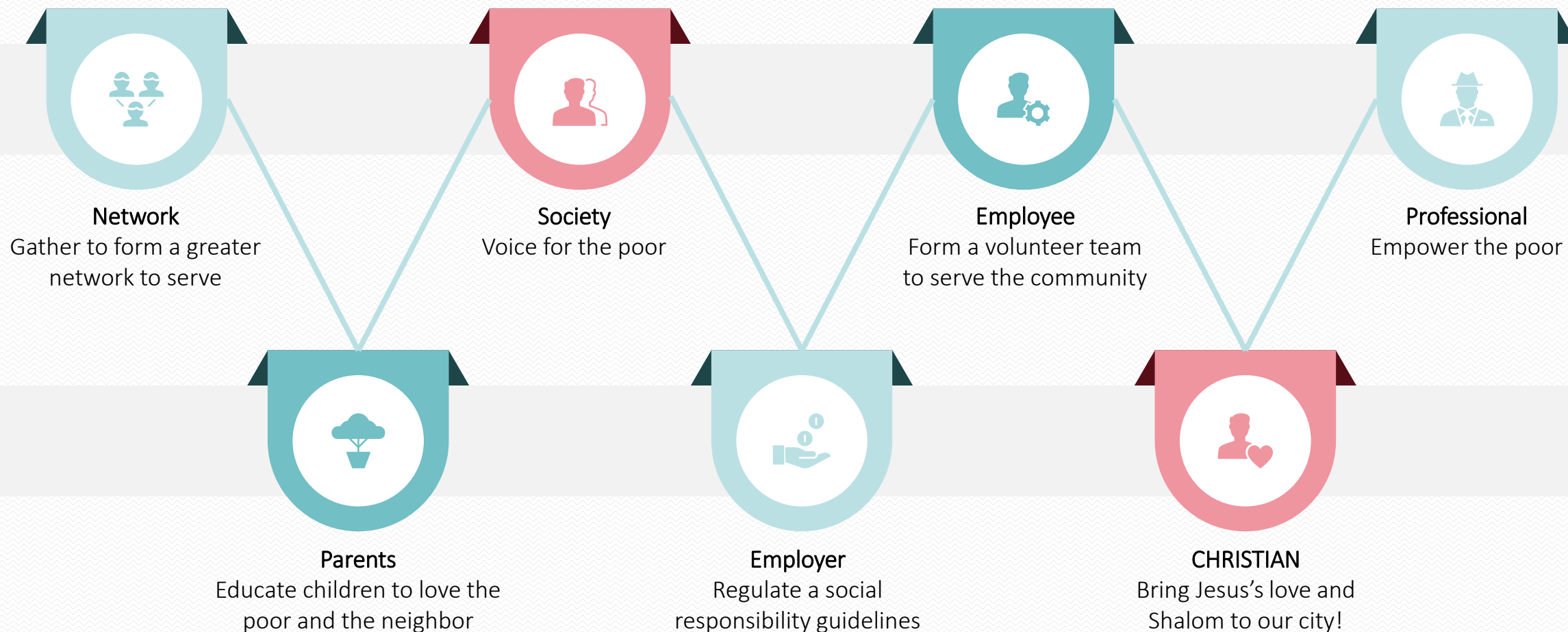


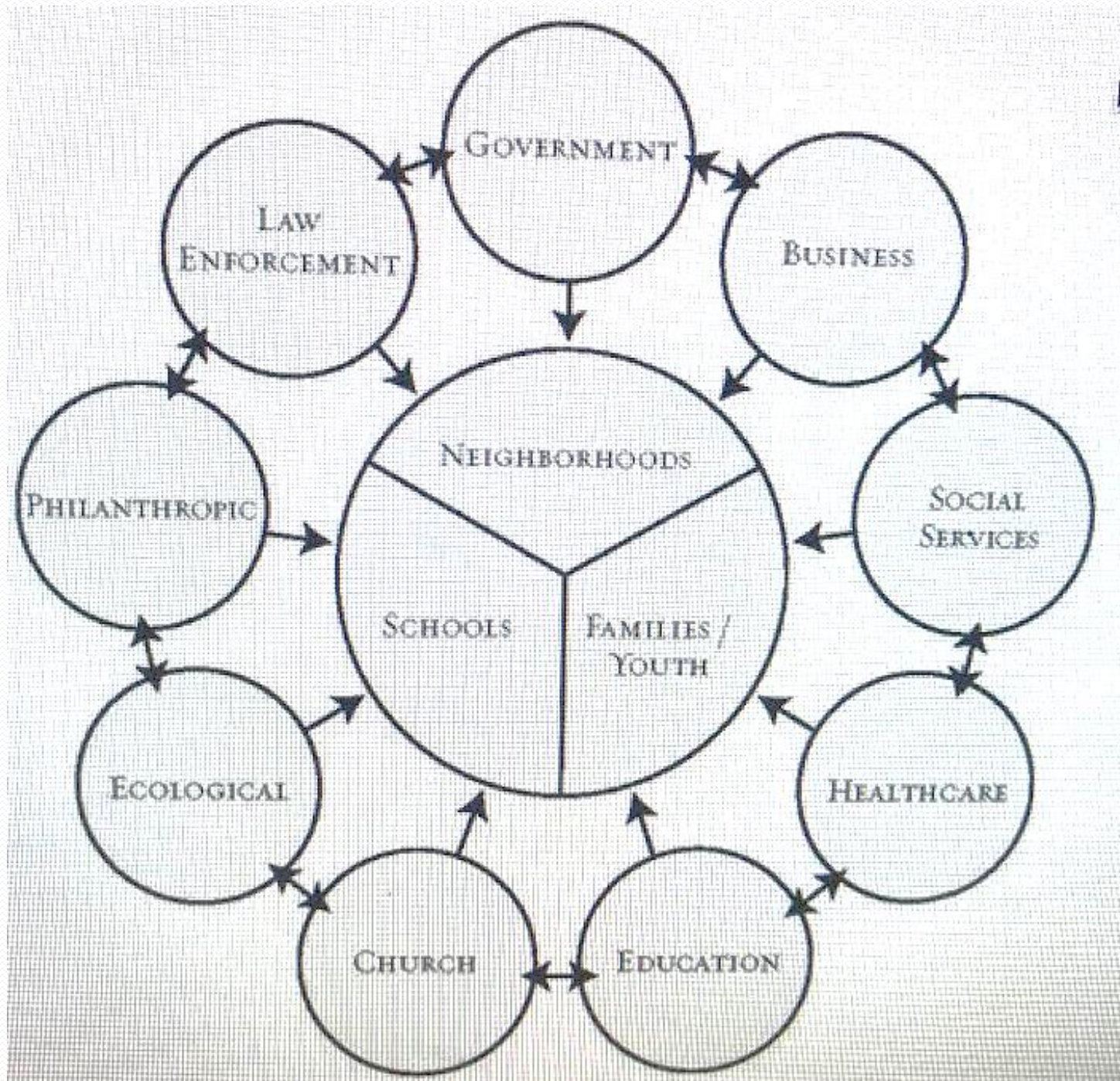
Hong Kong Church Network for the Poor (HKCNP) is a **network of community partners in collaboration** to serve the poor in poverty relief, poverty transformation, and poverty reform.

HK has a huge structural problem and we are hoping to resolve it with a **structural solution** in all 18 districts in HK.

HKCNP provides **knowledge-based, cared and trustworthy services** which focus on **capacity building, empowerment and mentorship**, to reduce wealth disparity in HK and increase social harmony.

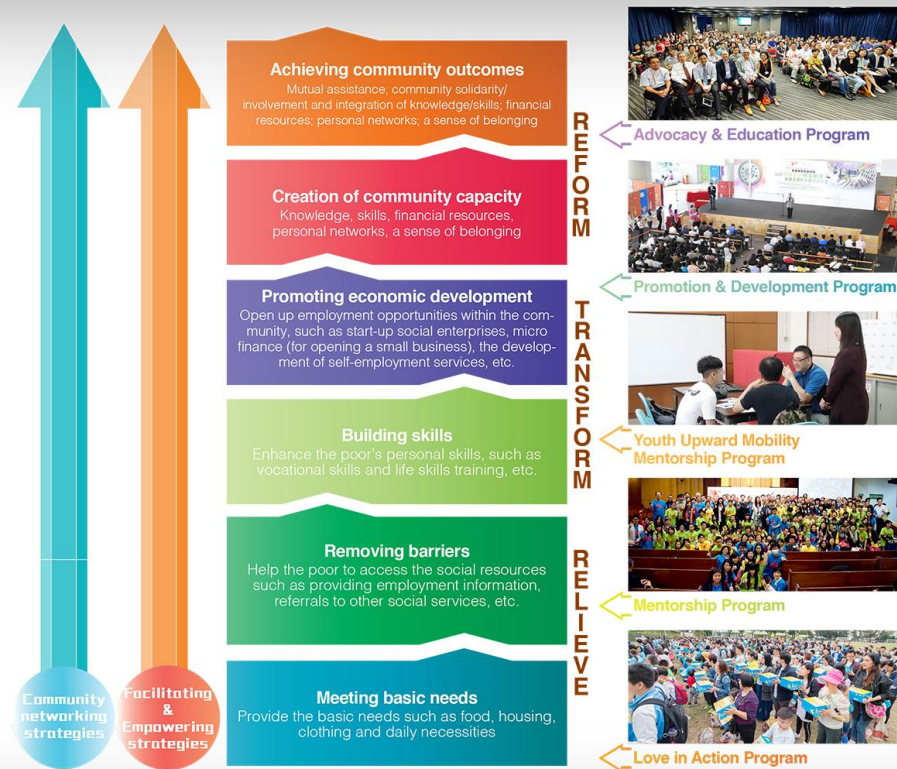
HKCNP connects everyone from all walks of life to TRANSFORM the city





Combat Poverty | Evangelism | Inter-generation Poverty | Social Movement | Advice on Government Policy | Social Harmony

HKCNP COMMUNITY TRANSFORMATION MODEL



The Network of Poverty Relief Networks with Prayers

That they all may be one; as thou, Father, art in me, and I in thee, that they also may be one in us: that the world may believe that thou hast sent me. John 17:21

Details of community transformation model
http://www.hkcnp.org.hk/core_services/transformation_model/

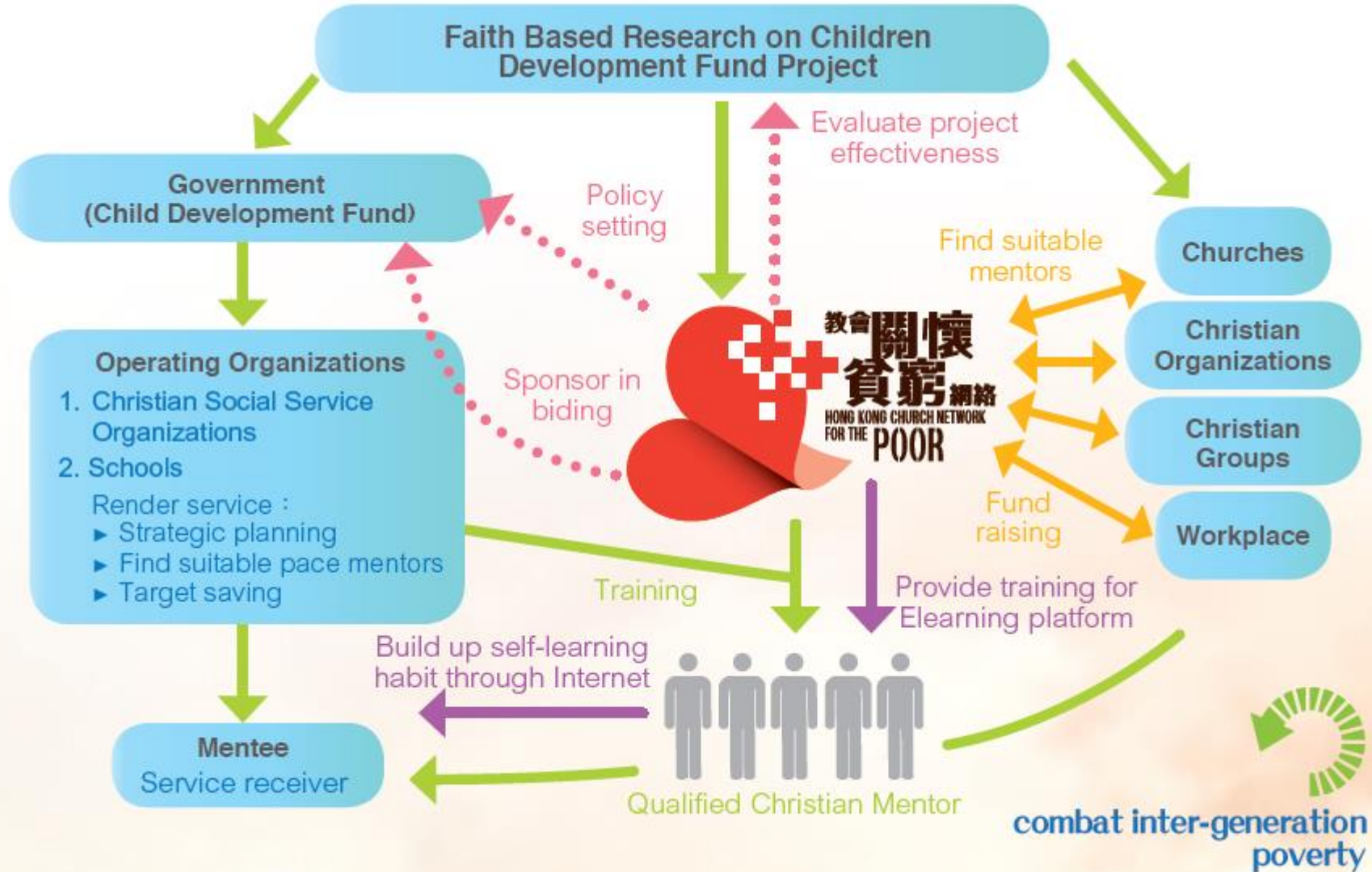
Dr Charles Chan

- One of the founders of HKCNP
- Director of board
- Leading the movement of mentoring
- Scheming and promoting “Child Development Fund” (CDF) and “Youth Upward Mobility Mentorship Program” (YUM)
- Deceased and rested in peace, but Charles’ ambition in serving the youth changed the whole city. Tens of thousand kids and teenagers were transformed.



What can a Christian Network do?

For example, Child Development Fund (CDF)



NETWORK to transform the lives of the poor

HKCNP Youth Upward Mobility Mentorship Program (YUM)

2015

2018

2019



- Failed DSE twice
- Hid in his room
- Lost hope

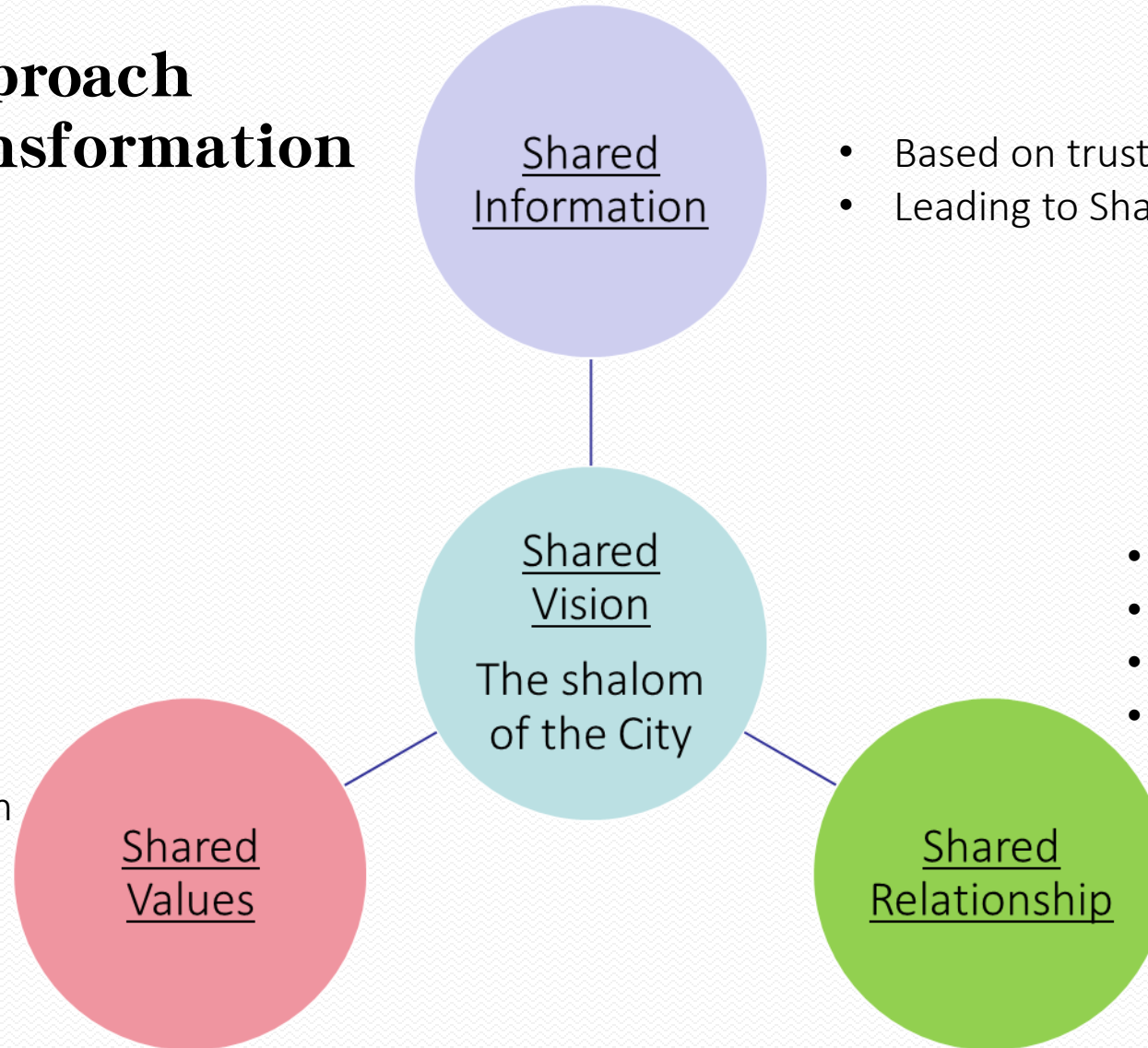


HKCNP Medium to share resources



Adopted Unified Approach to City Transformation

- Gospel Centrality
- Church Unity
- City Transformation



- Based on trusted research
- Leading to Shared Metrics/ Outcomes

- Church leaders
- Marketplace leaders
- Ministry leaders
- City leaders

IECC & Hope of the City Partnership with HKCNP

- Poverty Forum
- Evidence Based Research
- Love in Action
- Community Transformation work at Sham Shui Po
- Space Sharing Initiatives
- and a lot more ...



Be **AWARE**

Give us a like on
Facebook Page 😊

- Poverty News
- Anti-poverty Movement...



and **Pray**



Be **THANKFUL** of
what you have



and Take steps of
action to **pass His**
blessings and LOVE

Be **ENGAGED** in our
network to serve



Join our movement
to make use of your gifts

by sharing your **blessings**

Gifts?

Resources?

Relationship?

Connections?

Wisdom?

Manpower?

Prayers?



Testimony of volunteer Agnes & Edmund

As ambassadors for Christ

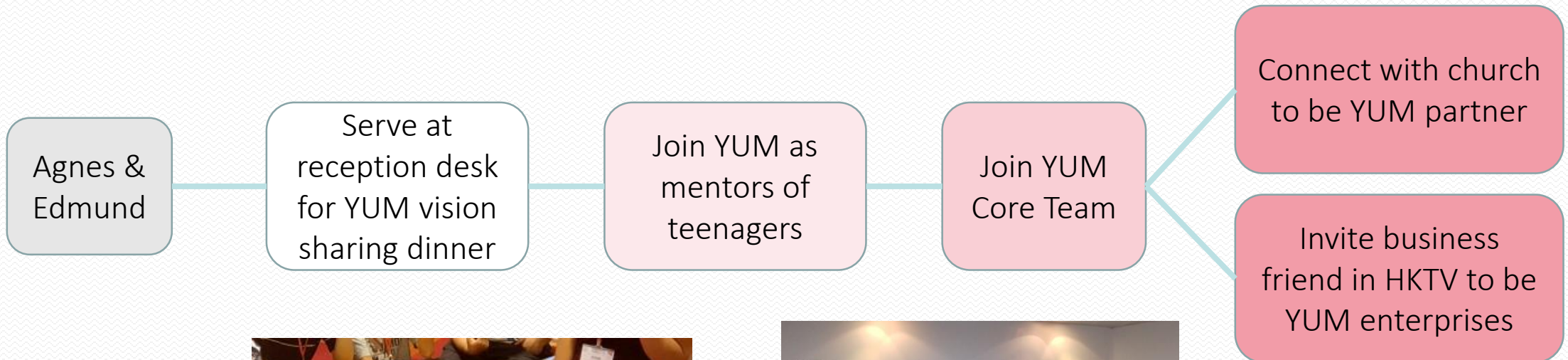
Individuals

Volunteers

Mentors

Facilitators

Catalysts
to share vision



District Tour

To Kwa Wan is one of the **poorest** neighbourhood in Kowloon with lots of **urban renewal projects** going on. The subdivided cubicles in “**tong lau**” accommodate people from **low-income workers, mainland immigrants, asylum seekers and ethnic minorities**, etc. With the experience of community building in To Kwa Wan for over 4 years, **Community Cultural Concern** will share stories of the residents’ and local small shops, information about urban renewal projects, as well as our work on empowerment.

Mr. Carl Gouw



Current HKCNP project that you can help



1017 Fast-a-meal
(Corporation)



Mentoring



District Research

And your talent in translation, video, and photography....

THANK YOU

Truly I tell you, whatever you did for one of the least of these brothers and sisters of mine, you did for me.

HOPE
OF THE
CITY



ISLAND
EVANGELICAL COMMUNITY CHURCH

Matthew 25:40

for your partnership

Serve the Poor Now



Contact HKCNP:
Email: info@hkcnp.org.hk
Website: www.hkcnp.org.hk
facebook: HKCNP