





## + Our Network

**Goal** Build up a territory-wide network to serve the poor and act as a united witness in Christ, join force together to show our concern to the poor in the society. Our action is based on Christ's love and no matter what our theological approach, denomination or agency are, our ultimate goal is to serve the poor as what Jesus Christ would do and become a Missional Community.

## + Advocacy and Education Committee

**Goal** Liaise closely with government departments, churches and the society to address the needs of the poor. Encourage churches to reflect and respond, so as to formulate effective forces to influence policy makers. Initiate policy changes to amend the formation of injustice and structural problems.

## + Love in Action

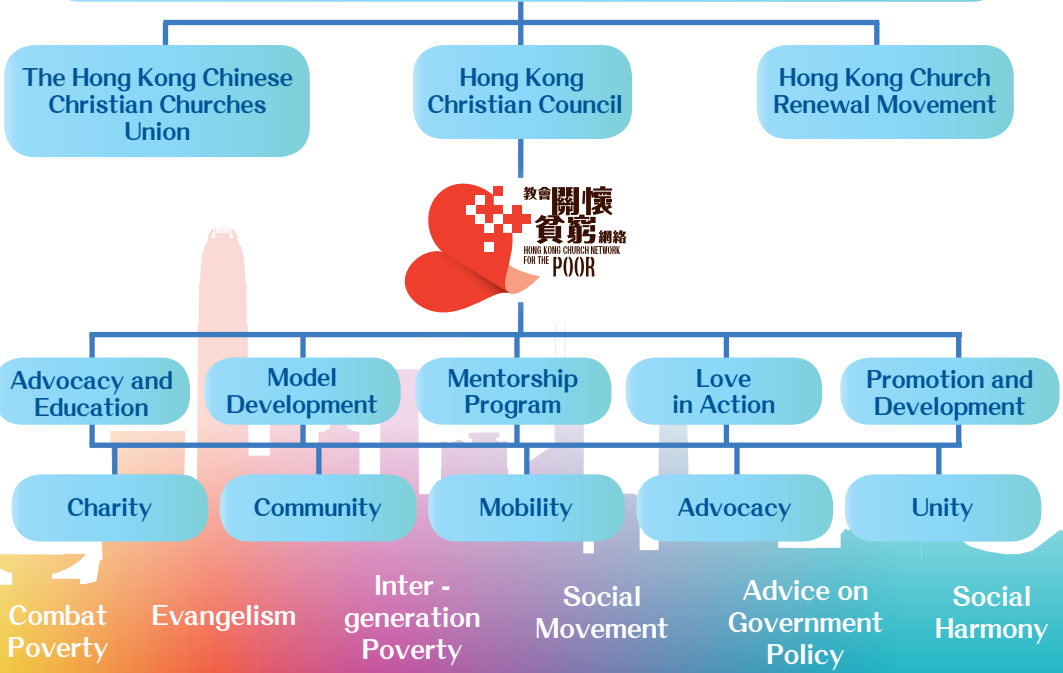
**Goal** The goal is to help our clients to build up confidence again through giving food, stuff, love and concern to them so that they will be able to face the future, respond to the needs of the society with God's love.

## + Network Partners

We would like to express our sincere gratitude to the churches in Hong Kong for their participation in poverty-alleviation work. More than just a task, we are leading a revolutionary campaign to unite churches and doctrines in Hong Kong to care for poverty and show united witness for Christ among the poor. We advocate different classes of the society to contribute to policy discussion and communicate with government officials to reflect the needs of the underprivileged groups.

**1300+**  **350+**  **500,000+** 

Hong Kong Church Network for The Poor aims to unite 1300 churches, 350 Christian Social Service Organizations, 500 thousands Christians to set up a network to serve the poor.



By making more people know, we can mobilize the society and the government to implement policy changes to help those in needs

Dr. Nim Chung. Chan, Convenor of the Education and Advocacy Sub Committee of the Network

Regarding the direction for the development of district-wise poverty work, the (District Designated) Office will communicate with different district organizations, strengthening the mutual networks within the districts, coordinating with social service groups and institutions to work together on poverty-aid services, in particular churches' network organizations.

Address of Kwun Tong District Social Welfare Officer Mr. Peter Ng in a Kwun Tong District Poverty Conference organized by the Network in 2012



## The development of Love in Action program

In the past, the Hong Kong Church Network For The Poor played a role in building connection between the churches and the Christian organizations that provided short-term food assistance in the front line. We also provided consultation over the operation of food assistance scheme, technical support, case transferring services. As for the churches, they were responsible for providing places, inviting brothers and sisters as the volunteers, showing concern about recipients' spiritual needs and sharing gospel when they distributed food to the recipients.

Apart from having the original Love Food Bank service, we built a closer partnership with other churches in 2013. We opened up our service with a greater diversity including "Loving Bread", "Loving Lunchbox", "Loving Gifts" and "Loving Canteen" to serve the needy. At the same time, we began to link with three organizations which were funded by the government: St. James' Settlement, Kwun Tong Methodist Social Service and Baptist Oi Kwan Social Service. These organizations offered short-term food assistance and effectively reduced the churches' expenditure on the operation of food assistance. Therefore, the churches could have more flexibility in cooperating with other organizations working in the front line and give blessings to the people in need.



2002

- + Established the "Church Campaign for the Unemployed".

2003

- + Built up networks in East Kowloon, Sham Shui Po, Tung Chung and Central and Western districts to provide the unemployed with counseling and emotional support.

2004

- + The network received more than 5,000 calls and helped the creation of 1,000 job opportunities.

2005

- + Called churches to take actions to stop "inter-generation poverty".

2006

- + Prepared the Faith-based mentoring programme.
- + "Church Campaign for the Unemployed" was renamed "Hong Kong Church Network for the Poor"(HKCNP).

2007

- + Launched the "Church Intensive Community Mentoring" with 21 churches.

2008

- + Government launched the Child Development Fund (CDF): HKCNP sponsored Industrial Evangelistic Fellowship and Christian Action to join and set up a matching fund.

2009

- + Conducted the CDF Mentorship Training Programme.
- + Organized seminars about churches' actions under the financial tsunami.
- + Established Love Food Bank gathering more than 30 churches.

2010

- + HKCNP sponsored Industrial Evangelistic Fellowship, Christian Action and the Peacemaker for applying the phase II CDF in Yuen Long, Tin Shui Wai, Kwun Tong, Tseung Kwan O and Kwai Chung.

2011

- + Industrial Evangelistic Fellowship and Christian Action applied Phase III CDF to serve 600 children in Sham Shui Po, Hong Kong Island, Yuen Long, Kwun Tong and Tseung Kwan O.
- + 50 churches joined the Love Food Bank serving 4,500 cases and 10,000 people.

2012

- + Actively conducted seminars and promotion:
  - Raised suggestions to the Chief Executive.
  - "Mobilize to Concern the Poor" Seminar.
  - Kwun Tong District Seminar.
  - 33 churches joined 10.10.10 Anti-poverty Movement.

- + Phase III CDF served 600 children in Sham Shui Po, Hong Kong Island, Yuen Long, Kwun Tong and Tseung Kwan O.
- + Love Food Bank helped 12,000 cases and 30,000 people.

2013

- + Advocacy and Education:
  - Published articles in Ming Pao and Christian Weekly.
  - 79 churches participated in 10.10.10 Anti-poverty Movement.
  - Submitted a letter to advise the Chief Executive on poverty policy.
  - Organized the "Experience Poverty" programme with churches and organizations.
- + CDF Mentorship Programme:
  - 5 partner organizations got the permission to conduct phase IV CDF Mentorship Training Program.
  - 1,200 children were served.

- + Love Food Bank:
  - 3 partner organizations launched the short-term food assistance.
  - More services were explored to serve the poor.
- + Promotion:
  - Launched meetings of "East Kowloon Church Network".
  - Established district networks in Shatin, Shek Kip Mei and English speaking churches.
  - Developed the HKCNP Community Transformation Model.

2014

- + Advocacy and Education:
  - Held the Workshop on Christian's Response to Inequality and published as a resource package
  - Held the English Churches Round Table Meeting, HKCNP Poverty Forum
- + Mentorship Program:
  - Longitudinal research of the fourth batch of CDF program
- + Love in Action
  - On the top of Love Food Bank, initiated a diversifies mode of services and extended the services to a non-materialistic level

Sincerely invite you to join us as a partner of HKCNP to form a church network and be a united witness

## HKCNP's needs for prayer and offering :

- + Pray for the works of HKCNP, may God use them for united witness.
- + Agree with the mission and vision of HKCNP and motivate Christian to serve the poor.
- + Actively participate in the education and advocacy of justice and social policy
- + Support the transformation of communities by HKCNP
- + Partners of HKCNP in church, agencies or media.
- + Regular donation to support the works of HKCNP

Link to register:  
<http://goo.gl/xqbEOy>

or download the file  
<http://goo.gl/ML4ZUG>

**HKCNP Ambassador**  
Register as HKCNP Ambassador if you have the will to voice out for the poor by promoting the vision, mission and activities of HKCNP!  
Please go to the following website to register online: <http://goo.gl/La723X>

## + How to donate

- ☐ Cheque payable to "The Hong Kong Church Network For The Poor Company Ltd." Bank Name  Cheque No.
- ☐ Credit in Hong Kong Bank account : 168-523-470-838. Send back the receipt to us .
- ☐ Call 3689 9810 for autopay arrangement.
- ☐ Use online banking donation: search "The Hong Kong Church Network For The Poor Company Limited". Please inform us your donation details.

Support to HKCNP : ☐ Annually ☐ Quarterly ☐ Monthly ☐ One - off

Donation HK dollars : ☐ \$100 ☐ \$500 ☐ \$1,000 ☐ 5,000 ☐ \$10,000 ☐ Others

Support: ☐ General fund ☐ Love in Action ☐ Promotion and Development ☐ Education and Advocacy ☐ Community Transformation Project ☐ HKCNP 101010 Anti-poverty Campaign ☐ Child Development Fund ☐ Others

Name / Church / Organization

Contact Person  Church

Tel  Email

Address

Tax donation receipt for donation HK\$ 100 or above.

Charity listed on  
**WiseGiving**  
惠施·慈善機構